

# Taking your businesses from strength to strength.

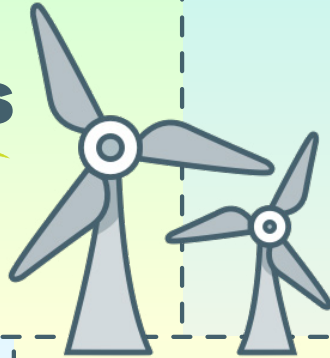


A look back at an amazing year.

Thanks to advisers like you, it's been an incredible year of protecting clients with LV= Home and Landlord insurances. But don't just take our word for it, the strength is in our numbers...

**5** questions

to get a quote with SmartQuote tech.



LV= GI will be powered by **100%** renewable energy by end of 2023.

**50%**

of claims resolved in 1 call.\*

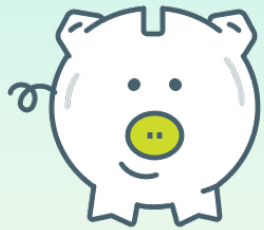


**£0**

to adjust your clients' Home or Landlord policy.

**364**

years of combined GI experience in a team of **35**\*\*



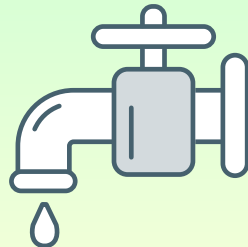
**0%**

interest to spread the cost of cover over 12 months.



**£1,000**

Home Emergency cover as standard.



**£0**

to cancel your clients' Home or Landlord policy.

**1**

consistent claims journey for all your customers.



\*Includes all LV= and all home claim types, based on 2022.

\*\*Combined no. of people and years of experience in the Intermediary Account Management, Regional, PST, Learning & Development and Marketing Teams.



**GENERAL INSURANCE INTERMEDIARY**